

CITY MANAGER
Fort Lauderdale, FL

The Position in Brief

Draft under development by the search firm.

The City

Fort Lauderdale is a community of 184,255 on 35 square miles situated along the New River and the Atlantic Ocean. Located 42 miles south of Palm Beach and 28 miles north of Miami, Fort Lauderdale is the county seat of Broward County. It is part of the Miami-Ft. Lauderdale-West Palm Beach Metropolitan Statistical Area, a region with a population of approximately 6.18 million, and was recognized as an [All-America City Hall of Fame](#) inductee in 2023.

The Fort Lauderdale-Hollywood International Airport and Port Everglades are just a short drive from the city center, while Miami International Airport and the Port of Miami are less than an hour's drive from the city, making Fort Lauderdale an ideal location for business, leisure, and international travelers. The city is accessible via Interstates 95 and 75, U.S. Highway 1, and the Florida Turnpike. However, there are multiple alternatives to driving, including the [Brightline](#) high-speed passenger rail line which runs north and south between the downtowns of Miami, Fort Lauderdale, West Palm Beach, and Orlando multiple times each day. The city is also served by the [Tri-Rail](#) commuter line and long-distance passenger rail service through Amtrak.

Fort Lauderdale offers a vibrant life for residents and visitors, including a host of arts, culture, entertainment, and recreational amenities. In addition to pristine Fort Lauderdale Beach, fans of the outdoors can enjoy hiking, canoeing, and camping at Hugh Taylor Birch State Park. The Riverwalk Arts & Entertainment District runs east to west along the popular Las Olas Boulevard with access to the Broward Center for the Performing Arts and a range of shopping, dining, and nightlife offerings. The city is also home to the Stranahan House, the Bonnet House Museum & Gardens, the African American Research Library & Cultural Center, the Stonewall National Museum & Archives, and many other unique and historical cultural amenities.

Broward County Public Schools serves nearly a quarter million students through more than 300 schools and technical centers, including some of the top-ranked high schools in the country. Barry University, Nova Southeastern University, Keiser University, and Broward and City Colleges call Fort Lauderdale home along with a satellite campus for Florida Atlantic University.

Demographics & Related Data (Source: [U.S. Census Bureau](#))

Median Age	43.2 years
Median Household Income	\$75,376
Median Home Value	\$417,600

Race/Ethnicity White only, 54.7%; Black only, 29.3%; Two or more races, 11.3%; Hispanic/Latino ethnicity, 19.8%; All other races, 1.9 %

Educational Attainment High school diploma or higher, 89.6%
Bachelor's degree or higher, 40.3%
Advanced degree, 15.5%

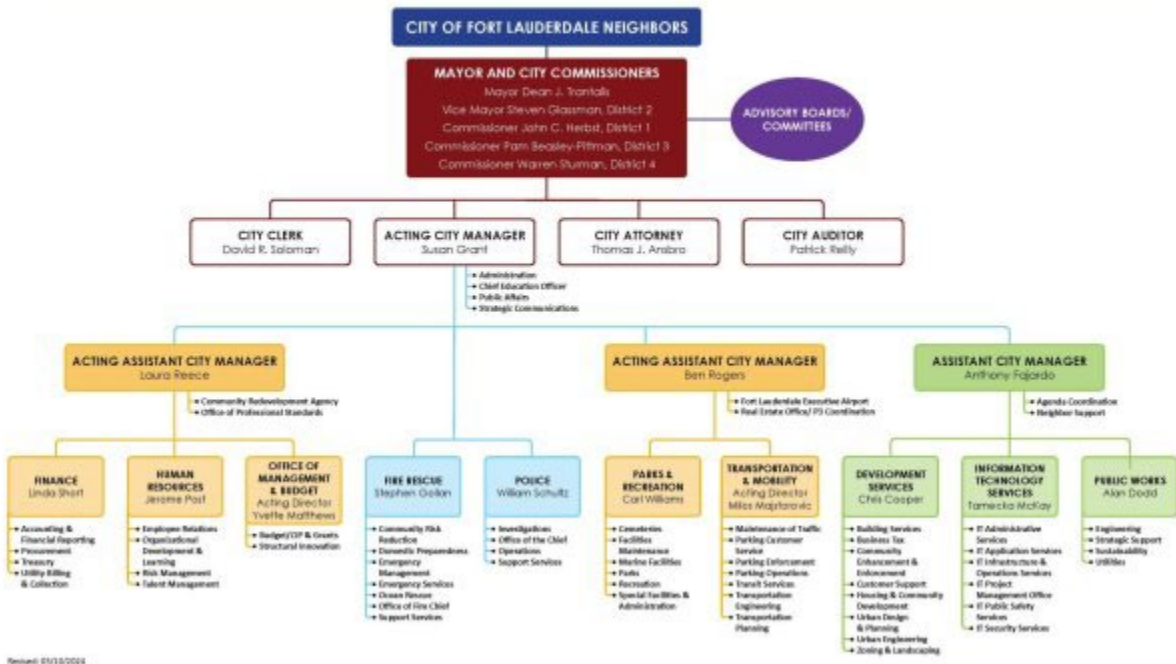
Average Travel Time to Work 26.3 minutes

The City Organization

The City of Fort Lauderdale operates under the commission-manager form of government. Four City Commissioners are elected by districts while the Mayor is elected at-large. Mayor and Commission races are non-partisan and members are limited to three consecutive four-year terms. The City Manager is appointed by and serves at the pleasure of the City Commission and has administrative oversight responsibility for all city operations and staff.

Fort Lauderdale has a FY2025 proposed budget of \$1.2 billion and 2,999 full-time equivalent (FTE) employees across all funds. The City has maintained its same low millage for 18 years.

CITY OF FORT LAUDERDALE ORGANIZATIONAL CHART



The City's "[Press Play Fort Lauderdale 2029](#)" strategic plan sets out the following direction:

Mission

We Build Community

Vision

The City you never want to leave

Values

Integrity, Compassion, Accountability, Respect, Excellence (ICARE)

Focus Areas

Public Safety

Housing

Infrastructure and Resilience

Public Places

Business Growth and Support

The [FY 2025 City Commission Priorities](#) have been developed and incorporated into the budget.

Challenges, Projects, and/or Key Issues

The City of Fort Lauderdale has several high-profile projects and initiatives that are in various stages of progress:

- Stormwater Drainage capital improvement program (\$700 million) to address flooding in susceptible areas of the city
- Water and Wastewater Infrastructure, including a new water treatment plant currently under construction via a Public/Private Partnership and the implementation of advanced metering infrastructure
- Completion of \$200 million Parks and Recreation General Obligation Bond Program
- Reimagining and rebuilding of City Hall following the demolition due to flooding in April 2023
- Completion of a new \$144 million public safety headquarters
- Addressing issues related to homelessness including the implementation of a new state law
- Consideration of a new commuter and freight rail lines through the downtown area, either via a tunnel or a bridge
-

Ideal Candidate

- 15 Years of management level experience in local government, with 5 years in the City Manager's/County Administrator's Office (Chief Executive, Deputy Executive, or Assistant Executive) in a jurisdiction with a population over 150,000
- Has served as City Manager or County Administrator
- Experience in city or county government in the State of Florida preferred
- ICMA – CM certification preferred
- Excellent leadership skills
- Financially astute and prudent
- Professional and respectful of staff, citizens and elected officials
- Knowledge of public safety services (Police, Fire Rescue, and Emergency Management)
- Proven ability to work with labor unions
- Experience with emergency preparedness and management (hurricanes) and knowledgeable of FEMA best practices

The City Charter requires residency during the term of employment, although not at the time of appointment.

Compensation & Benefits

- Salary is negotiable and will be competitive with the local market.
- Benefits provided are available at:
<https://www.fortlauderdale.gov/government/departments-a-h/human-resources/employee-benefits/benefits-handbook>

How to Apply

Interested candidates should send resumes to:

(contact information for GovHR USA to be inserted)